

## Inspiration of Leaky Scene in Interior Space Design

Chunye Zheng<sup>a</sup>, Wuna Zheng<sup>b</sup>

Wenzhou Polytechnic, Wenzhou, 325035, China

<sup>a</sup>27419488@qq.com, <sup>b</sup>188720009@qq.com

### Abstract

As a special form and technique of space visual design, leaky landscape is not only shining in the classical garden design, but also widely used in many fields of modern design. Its main functional characteristics include avoiding the outside and the inside, coexistence of artistry and culture, soft division of space, increasing the diversity, privacy and flexibility of space activities.

### Keywords

Design; Missing Scenes; Art.

### 1. Introduction

Leaky landscape is one of the landscape design techniques of Chinese classical gardens, which is a form and technique of space visual design evolved from frame landscape. Leaky scenery is to absorb other scenery through hollowed out partition, which has the effect of shielding the outside world and hiding the internal landscape. The partition here can be flower window, partition fan, leaky window, leaky wall, fence or sparse branches and leaves. It can also be called Xiejing, as shown in Figure 1. The leaky wall mentioned here refers to the records in the Ming Dynasty's Yuanye Literature: for example, there are also detachable walls in the railing type. If you can't make up your mind, you're afraid of heavy style, so it's better to use grinding. This kind of leakage effect is easy to arouse the interest of the viewer in looking for the scenery, and "leakage" itself has a kind of fuzzy beauty like reality and emptiness, like emptiness and reality. It not only increases the richness of space level, but also widens the diversity of dynamic and static viewing scenery. Time and light and shadow make the scenery change with the seasons and the mood. Therefore, the most attractive part of the leaky scene is to integrate the "change" of people and things into the scene, just like the current rise of interactive "art installation", which interweaves rich and diverse pleasant experience in the interaction. The above-mentioned art installation is a category of modern art, which mainly refers to the artificial synthesis of art works designed or planned by artists to express space, existence, perception and experience in three-dimensional space, especially in a certain place and space.



Figure 1. A corner of the garden



Figure 2. Inclined roof

## 2. Design Case Analysis

In addition to the landscape design commonly used leak scene approach to deal with space, in recent years, interior design also has new innovation and application. For example, in recent years, the well-known design company, Shenzhen bluemoon Interior Design Co., Ltd., has many excellent works, such as Kunming Hanhua Tianshan international hot spring resort experience center. In the design of the front hall, a patio is chiseled on the herringbone shaped roof to bring natural light into the interior space. The powerful beauty and flowing charm blend in the interior, and the virtual and the real coexist, and the poetry rises, as shown in Figure 2. The scheme design is based on the white tone of Camellia and the red smoke of sunset, which makes the open room full of elegant and warm feelings. "When I wake up drunk under camellia, I watch the sunset through the West Village.". The large-scale lighting looks like a colorful sunset, as shown in Figure 3.

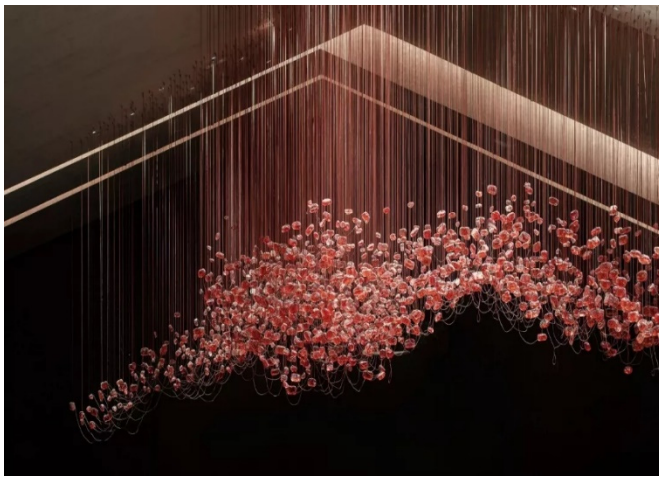


Figure 3. Lighting design

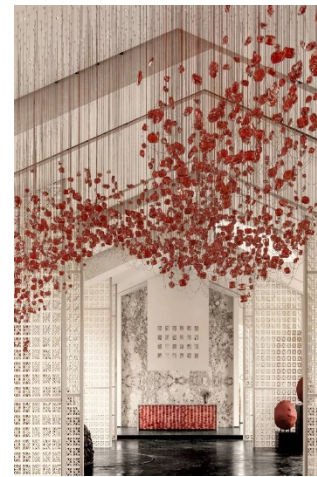


Figure 4. Decoration

In addition, there are also some problems, such as the partition of the pattern grid, the symmetrical layout of the vermilion glass screen, the brick red clay sculpture and so on. In the design of this case, looking up from the humanoid house, what is missing is the view of the sky. The lighting and the humanoid house are mutually leaking, as shown in Figure 4. The reception hall adopts the lattice background wall which simulates the traditional garden doors and windows, and what it leaks is the natural scenery outside the hall. What the two glass bricks and the middle partition board in the lobby leak is the interior scenery of the hall, and the ornament wall facing the window and the outdoor scenery leak each other, as shown in Figure 5.

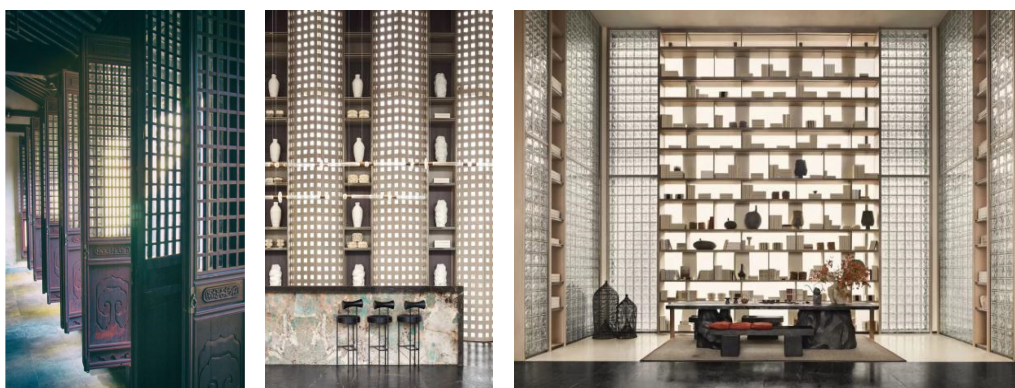


Figure 5. Hanhua Tianmashan International Hot Spring Resort



Kengo Kuma is a famous Japanese architect with a high international reputation. His architectural style is classical and modern. He has won the International Stone Building Award, natural wood building spirit award, etc. He is the author of "ten house theory", "negative architecture" and other works. Kengo Kuma designed the bamboo house of the commune at the foot of the great wall of China. The bamboo house is surrounded by light and shadow, and is surrounded by green shade. The leakage scene here is empty and blurred, with some Zen and poetic flavor, which makes people think and have a lot of interest. As shown in Figure 6.

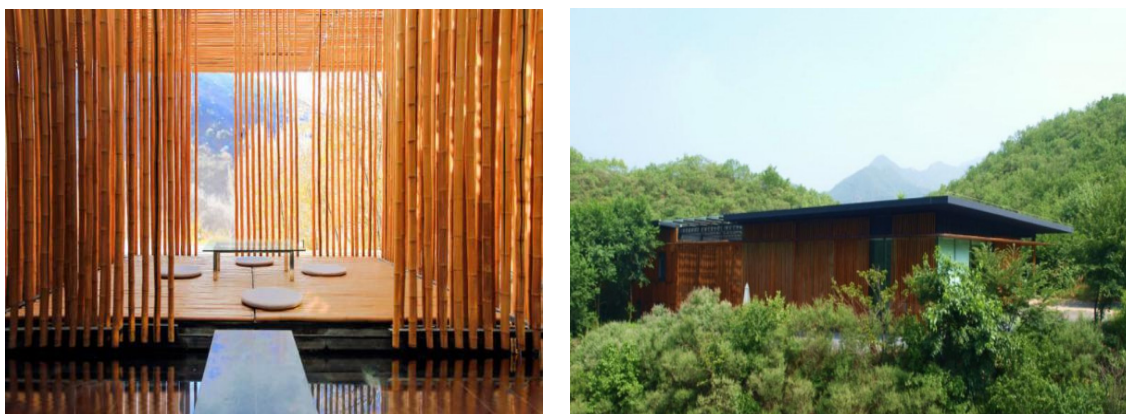


Figure 6. Commune and bamboo house at the foot of the Great Wall

### 3. The Function of Leaky Scenery Art

"Leaky scene" technique is not only limited to landscape, architecture and interior, as shown in Figure 7, but also applied in sculpture, painting, lighting, installation design and other fields. In the interior design of zhongshuge in Beijing, the technique of leaky scenery is applied, as shown in Figure 8. Generally speaking, the art of leaky scenery has the following functions.

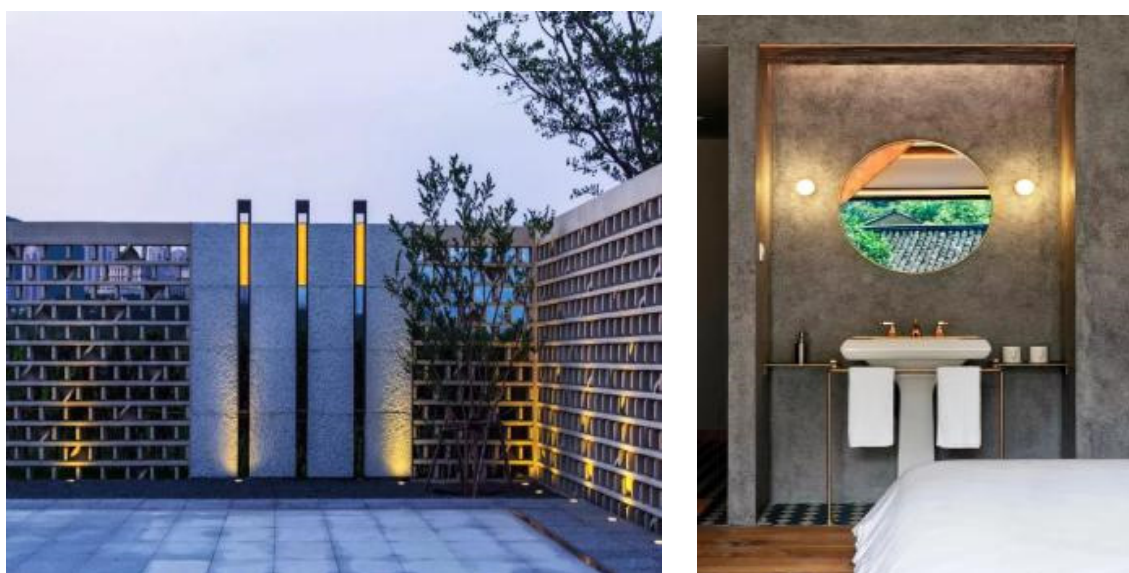


Figure 7. Application of leaky scene in architecture and interior space



**Figure 8.** Beijing Zhongshuge, Laofoye department store

First, avoid the outside and hide the inside, which can block the line of sight outside the wall, and make the scenery inside the wall have blurred and indistinct taste. It comes from Ji Cheng's Yuanye · leaky brick wall: "where there is a view, it seems to avoid the meaning of the outside and the inside. The leaky brick wall refers to the wall with a window opening on the garden wall and a hollow pattern built by the looking brick (the thin brick paved on the rafters) and the roof tile (Butterfly brick) in the air. Leaky brick wall is leaky wall, also known as "flower wall hole" in Jiangnan. Ancient tile even money, stacked ingots, fish scales and other categories, all of the screen, chat a few in the left. Here, fish scales refer to several popular forms of tile windows. Lian Qian: ancient coins with tiles stitched into a square inside and round outside. dieding: overlapping ancient silver ingots; fish scales: scales like fish. The three types are all curved because they are built with tiles.

Second, artistry and culture coexist. In addition to the difference between traditional classic patterns and modern patterns, patterns themselves have certain characteristics of decorative art and cultural communication. Exquisite patterns are not only the direct information carrier to enrich the space vision and level, and set off the artistic and cultural atmosphere, but also can form a new visual focus, and enhance the artistic atmosphere of the space and the corresponding living atmosphere. The art of leaky scenery makes the space full in vision and culture.

Third, the soft division of space, virtual and real, make space more poetic and Zen. Through the connection of indoor and outdoor environment and the transformation of virtual and real space, the leaky scene technique not only enables the viewer to obtain a better visual experience, but also provides the possibility for the extension of poetic and Zen space.

Fourth, increase the diversity, privacy and flexibility of space activities. Different from other partition methods, leaky scenery has stronger permeability, which not only makes the space private, but also makes space activities more flexible and diverse. It is often used in transitional space, such as the entrance of residential space and the soft partition of commercial space.

## 4. Conclusion

In addition, as far as the leaky scene technique itself is concerned, it can not only enrich the facade effect through hollowed out patterns, but also appropriately use modern translucent or transparent materials such as hollowed out mirrors, glass and composite plates to soften the spatial attributes, enhance the dialogue between internal and external spaces, and improve the quality of diversified spaces.

## Acknowledgments

Teaching reform research projects of Wenzhou Polytechnic in 2020, WZYzd202014.

## References

- [1] Li Jing, Cai Chun. On the implementation path of art education in primary and secondary school curriculum [J]. Curriculum. Textbook. Teaching Method, 2015 (12).
- [2] Yang Deling. The enlightenment of Chinese boneless painting on the teaching of watercolor painting [J]. Art Education, 2016 (1).
- [3] Gao Peng. Artistic expression of interior space design. Art Education Research, 2012(11).